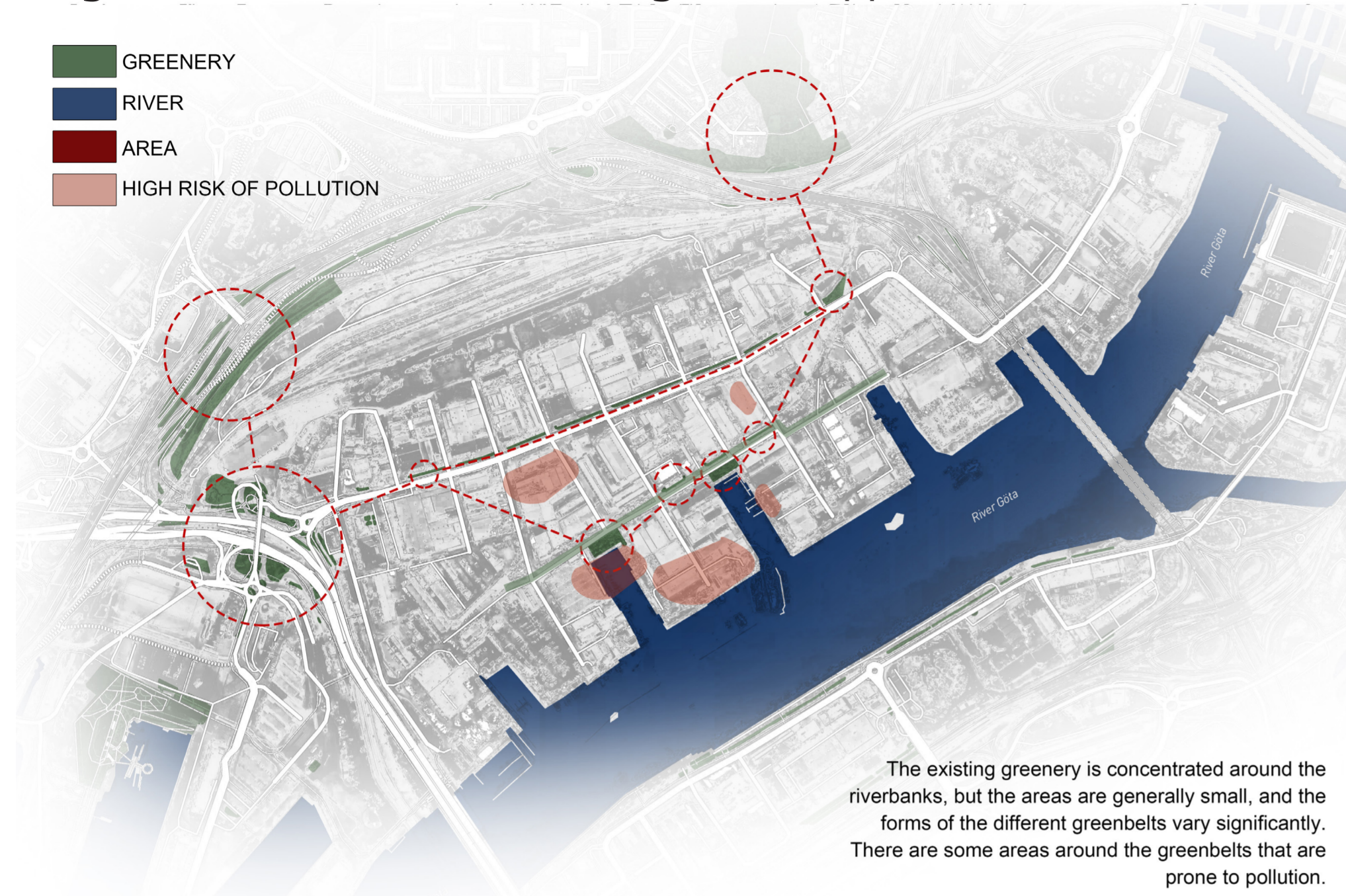


Flexible modular designs empower residents to actively participate in cultivating greenery, fostering a more sustainable and vibrant Ringön.

GREENERY PATCH

- GREENERY
- RIVER
- AREA
- HIGH RISK OF POLLUTION



Street Condition: Greenery and Public Space Use

The street greenery is offering little ecological support. As a result, large populations of birds in the area lack proper habitats and tend to gather around street-side waste sites, disrupting the work of sanitation staff.



The roads are predominantly unmarked for vehicular traffic, with few clearly designated pedestrian zones.

The streetscape has poor greenery conditions, with few concentrated green belts. Most of the roadside vegetation consists mainly of tall trees.



Small green spaces are poorly planned and lack functional features tailored to specific user groups.



The surrounding area is predominantly occupied by industrial buildings, leaving local residents with a lack of spaces for social interaction and leisure walks.



Proposed Functional Solutions



create habitats for

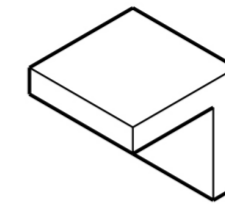
CHILDREN
Children require sufficient space to ensure safe and enjoyable play opportunities.



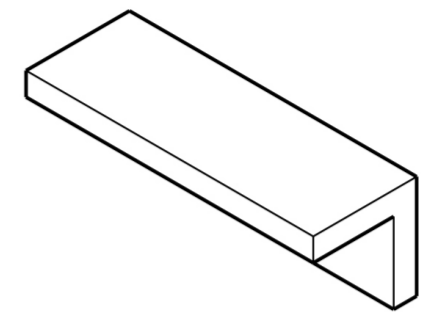
ADULTS
Adults need spaces for rest and social interaction.



Basic Birdhouse
15×20×25cm
The bird species in Gothenburg are primarily medium-sized, such as pigeons, gulls, and starlings.



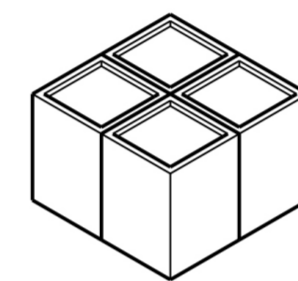
Single Seat
45×45×45cm
Considering the need to provide spaces for socializing and resting, the minimum measurement unit is calculated based on a single individual.



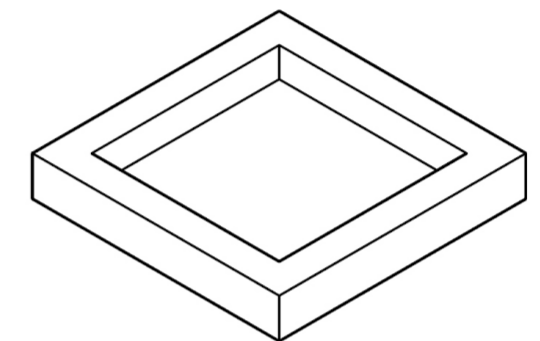
Double Seat
140×45×45cm
Taking social distancing into account, double seating arrangements need to be relatively more spacious compared to single seating.



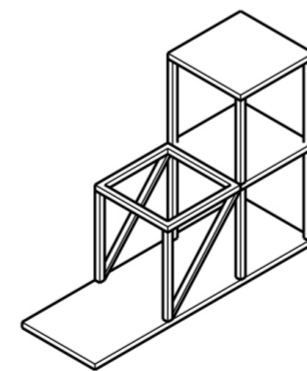
Single Plants Module
25×25×40cm
The smallest plant units are primarily composed of decorative low-growing plants.



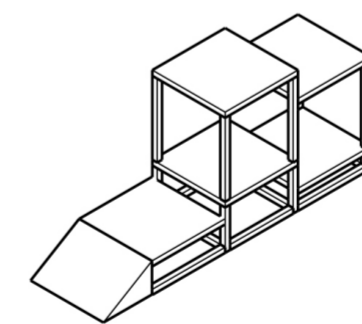
Shrubs Module
Medium-sized units are primarily composed of shrubs, offering a wide range of size flexibility.



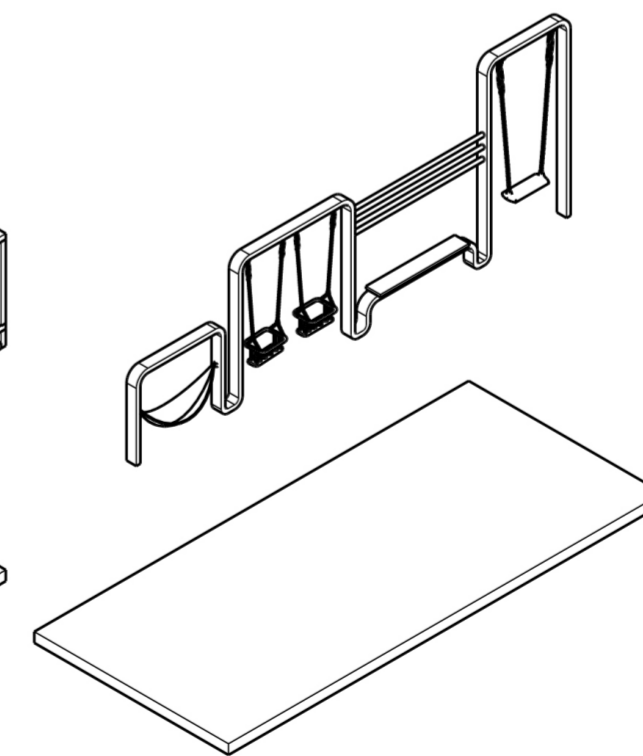
Tree Pits
2.5×2.5m
The size of the landscape tree pits is controlled within the minimum unit.



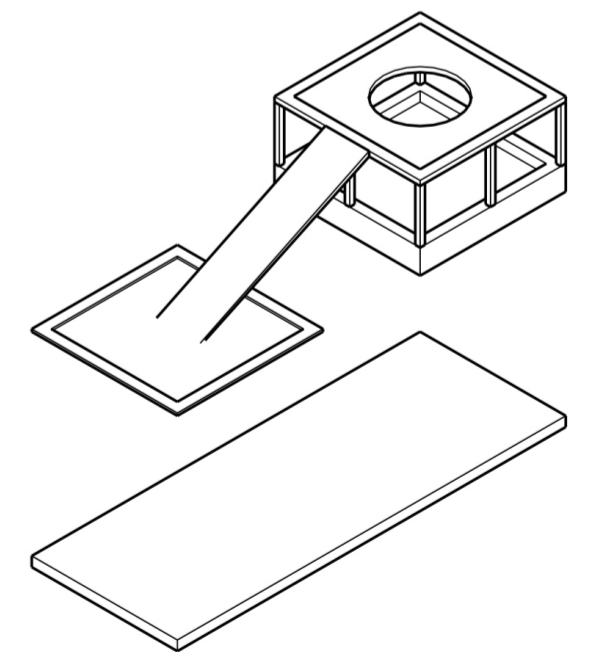
Module 1
1.5m×4.5m



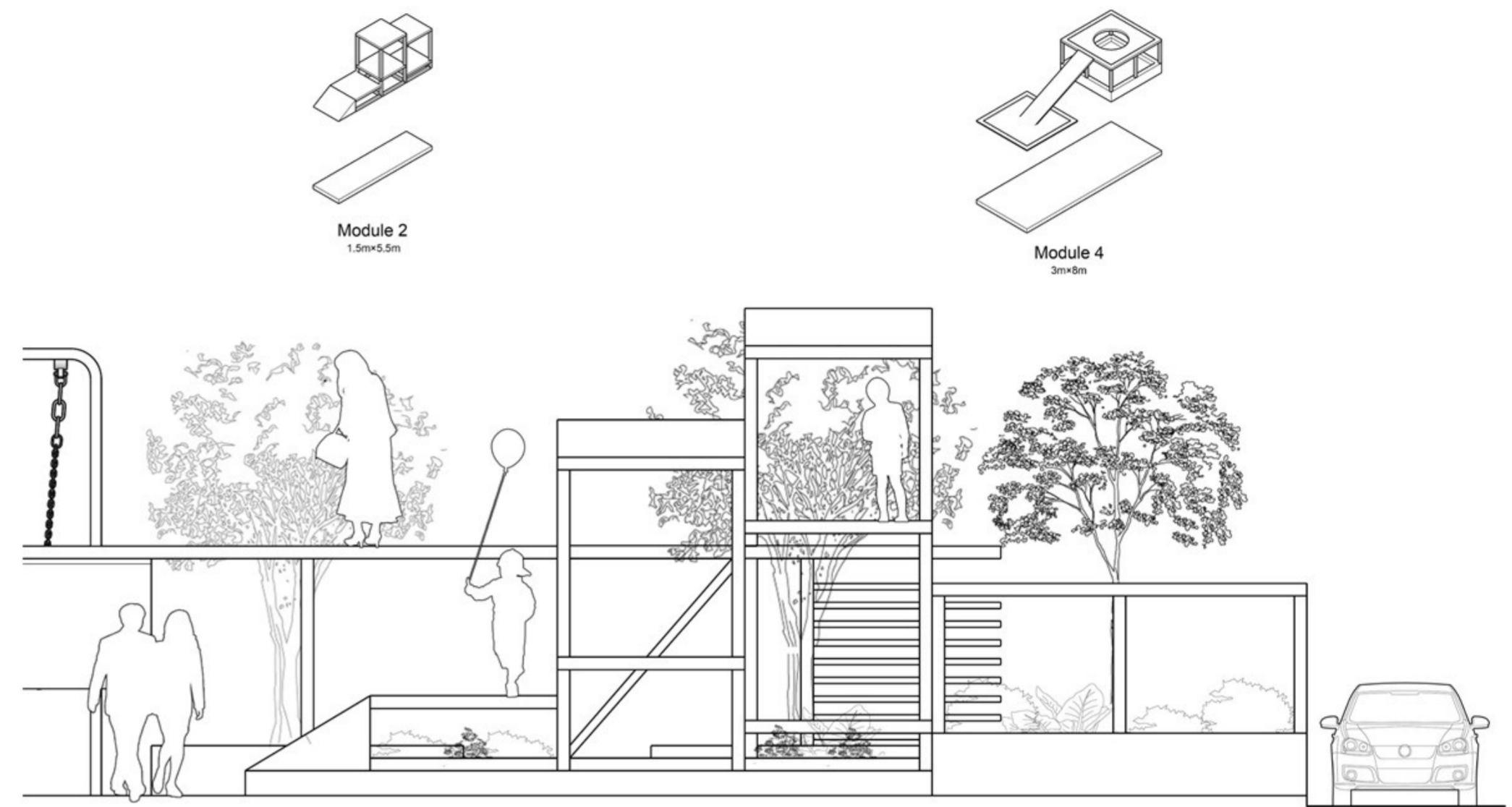
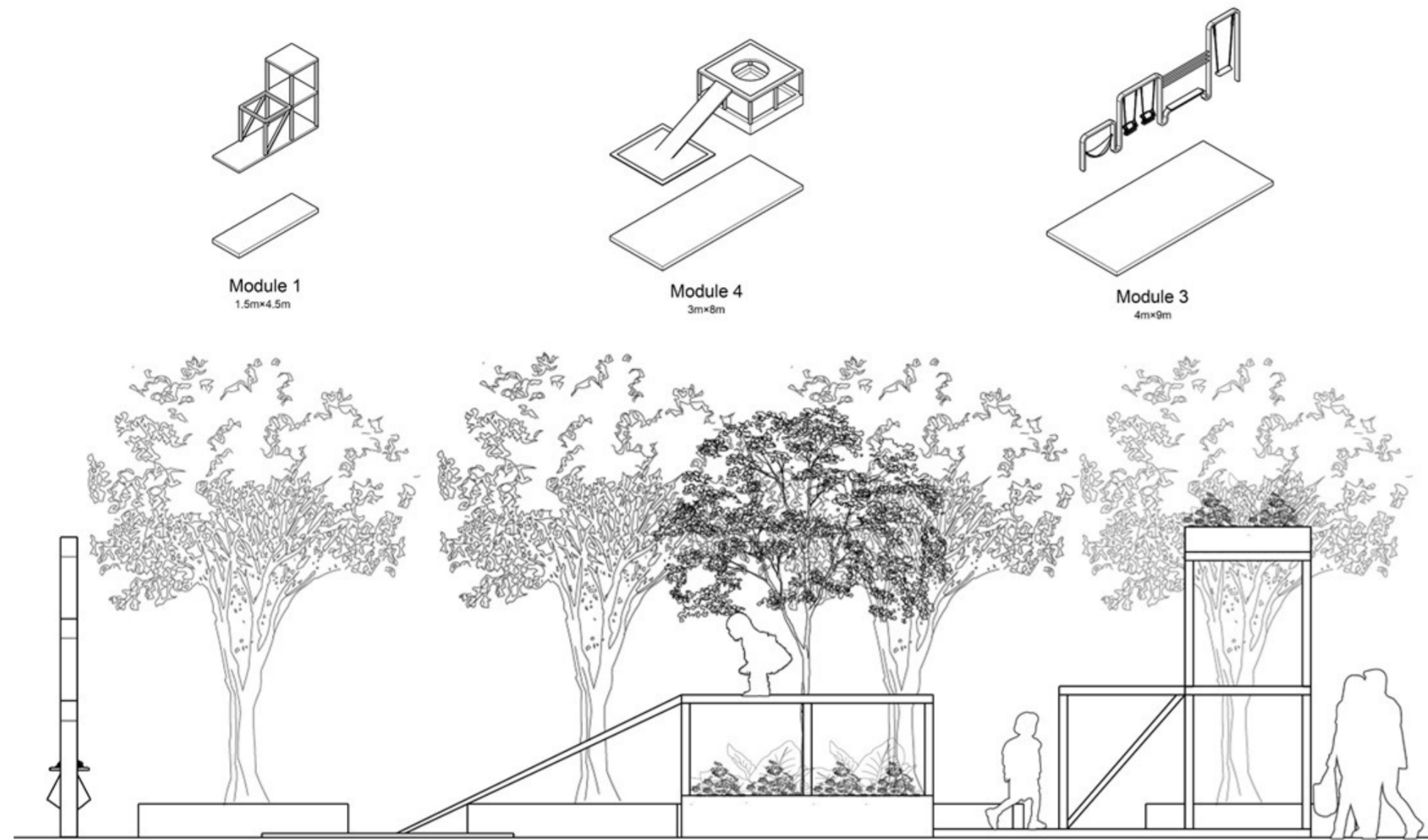
Module 2
1.5m×5.5m



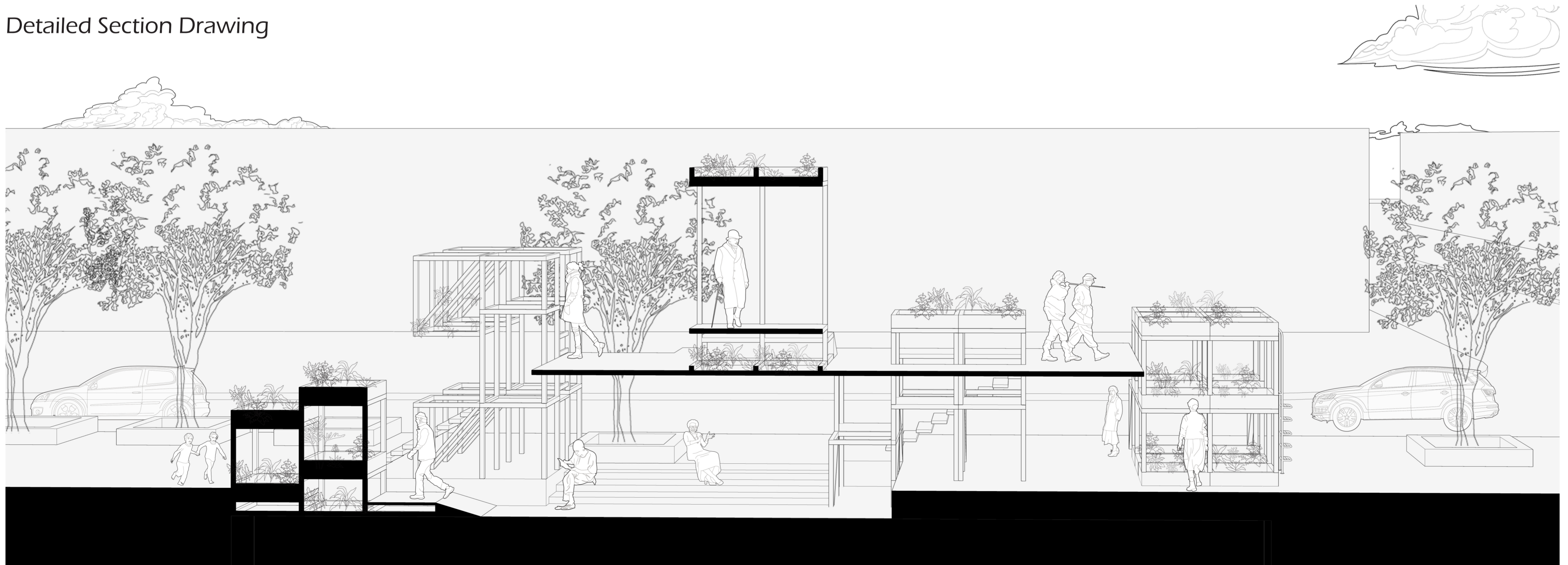
Module 3
4m×9m

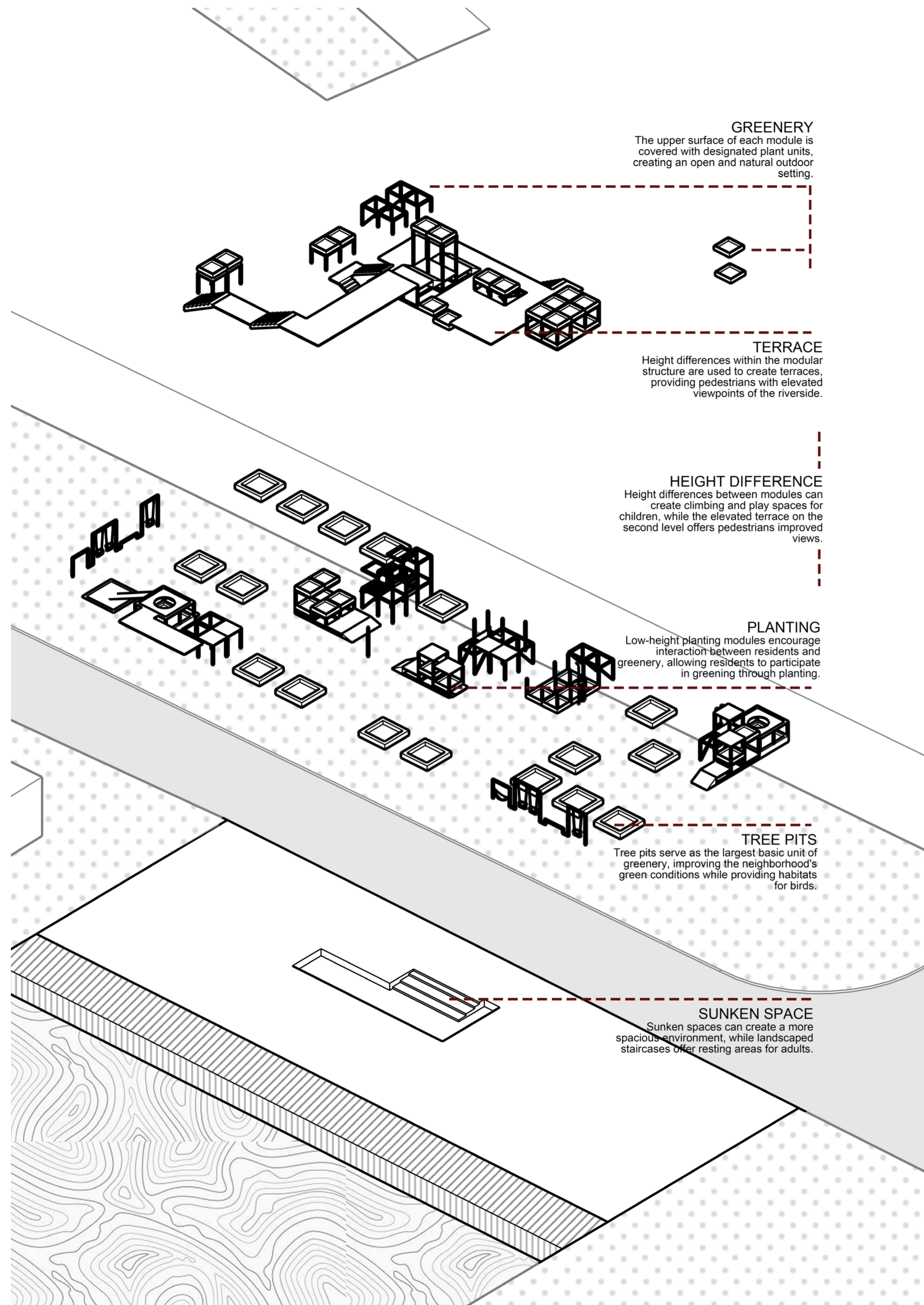


Module 4
3m×8m

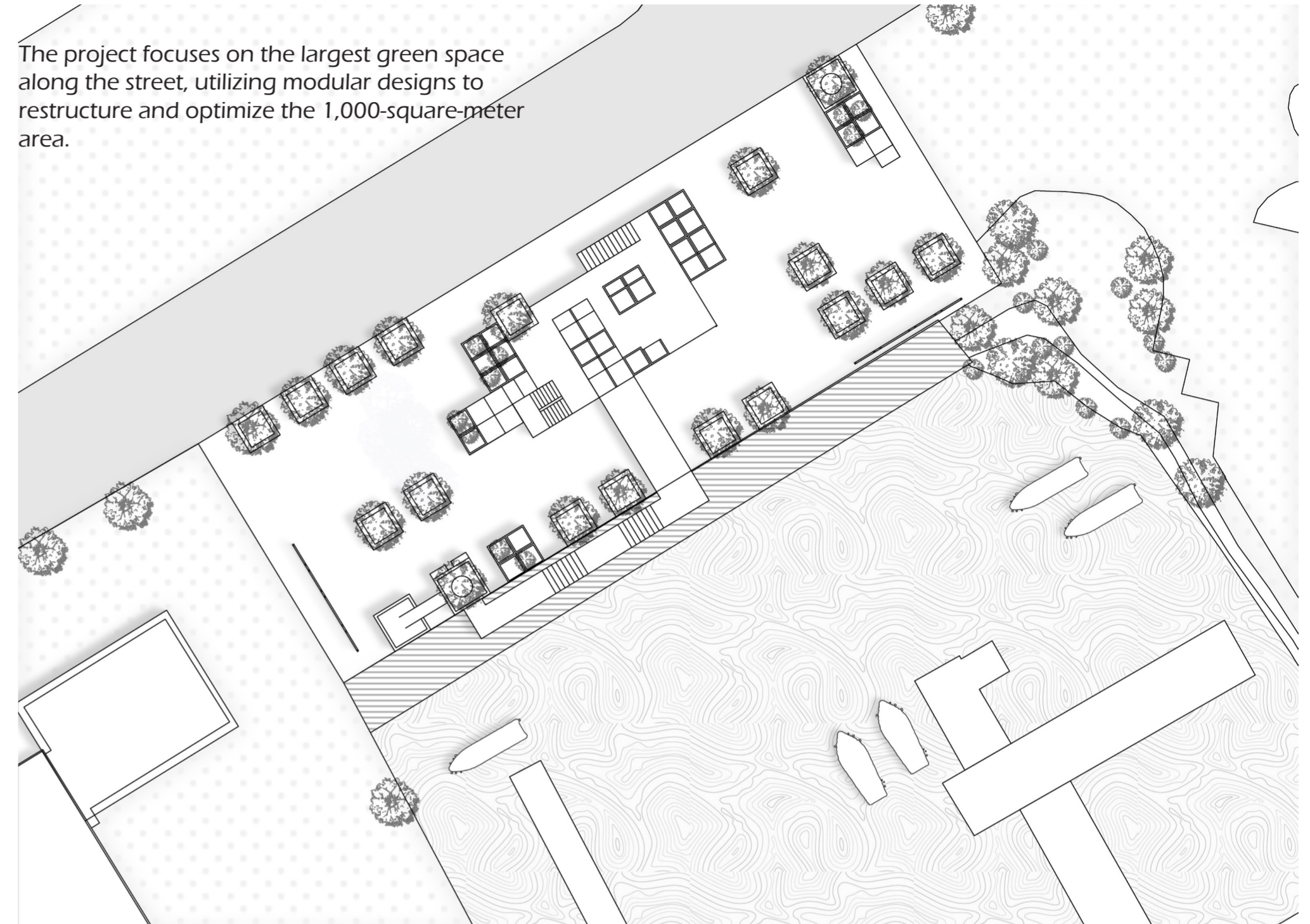


Detailed Section Drawing

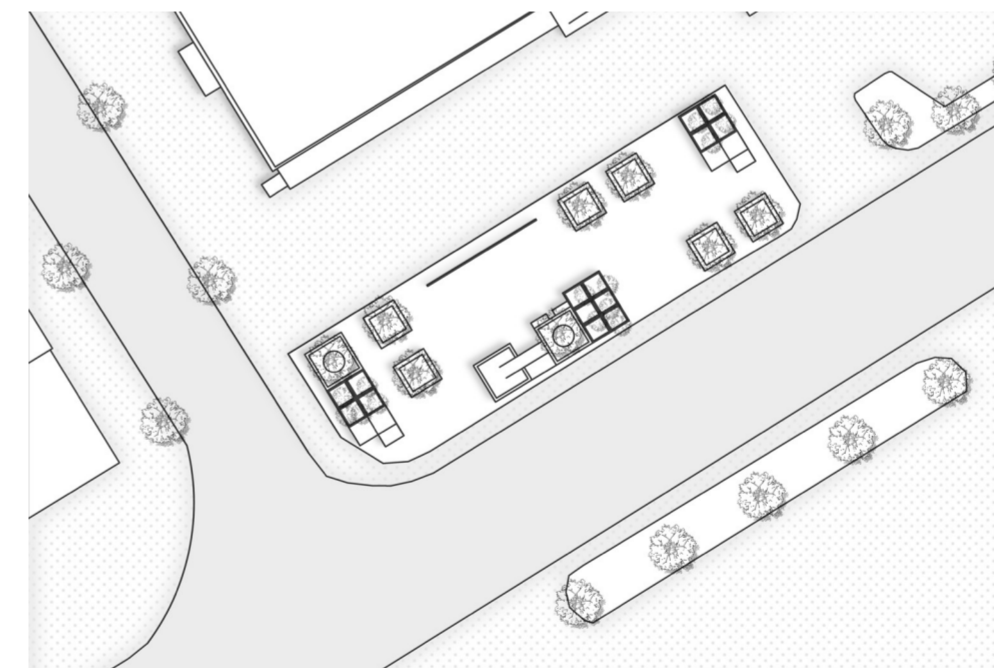




The project focuses on the largest green space along the street, utilizing modular designs to restructure and optimize the 1,000-square-meter area.



Potential Growth



280 m²

The modules can be arranged to create a mini park within the 280-square-meter green belt along Ringön street.

The modules can be organized along the approximately 100-square-meter green belt on Ringön street to meet the basic needs for greenery and relaxation.

100 m²

